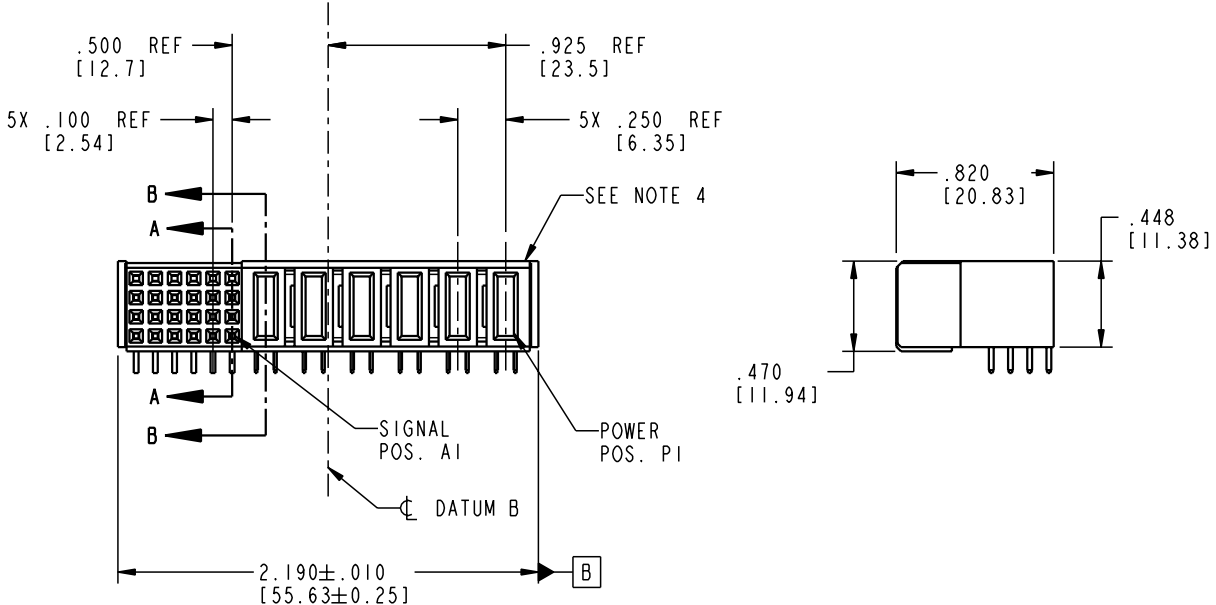


Tous droits strictement réservés. Reproduction ou communication o des liers interdite sous quelque forme que ce soit sans autorisation écrite du propriétaire. Propriete de c FCI. Droits de reproduction FCI.

FCI

All rights strictly reserved. Reproduction or issue to third parties in any form, whomever is not permitted without written authority from the proprietor. Property of FCI. Copyright FCI.

PRODUCT NO.	ROWS	SIGNAL				POWER							
		6	5	4	3	2	1	P6	P5	P4	P3	P2	P1
51776-003	D C B A	H	H	H	H	H	H	PA	PA	PA	PC	PC	PA



CODE	DIM "M" MATING LENGTH	CONTACT TYPE
E	N/A [N/A]	SIGNAL
F	N/A [N/A]	SIGNAL
G	N/A [N/A]	SIGNAL
H	N/A [N/A]	SIGNAL
PA	.042 [1.07]	POWER
PC	.092 [2.34]	POWER

mat'l code SEE NOTE 2				tolerances unless otherwise specified		CUSTOMER		FCI www.fciconnect.com		
ltr	ecn no.	dr	date	linear	.XX±.01/0.X±0.3	COPY		projection	title 6P + 24S R/A SOLDER RECEPTACLE	
A	V21401	CGD	08/29/02		.XXX±.005/0.XX±0.13	INCH/MM				product family
					.XXX±.0020/0.XXX±0.051	scale 1:1				PwrBlade
				angles	0° ± 2°			code	213	
				dr	C. DAILY	08/29/02			sheet	
				engr	M. MOSTOLLER	08/29/02			1 of 4	
				chr	M. MOSTOLLER	08/29/02				
				appd	M. MOSTOLLER	08/29/02				
sheet index	revision sheet	A	A	A	A					
		1	2	3	4					

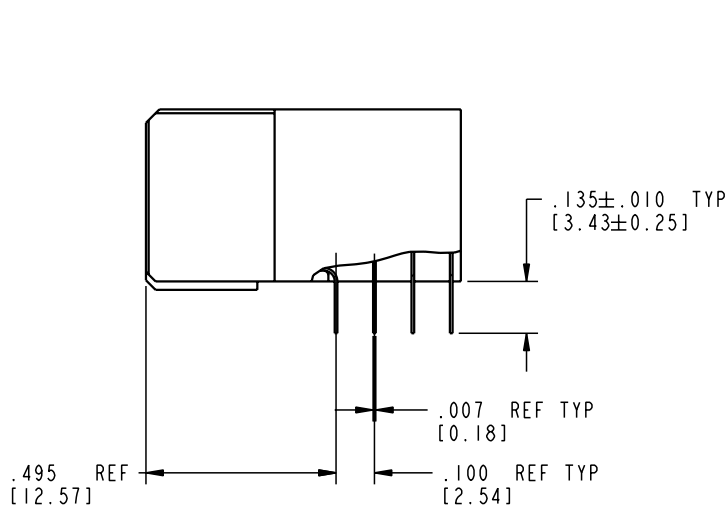
cage code 22526

Pro/E

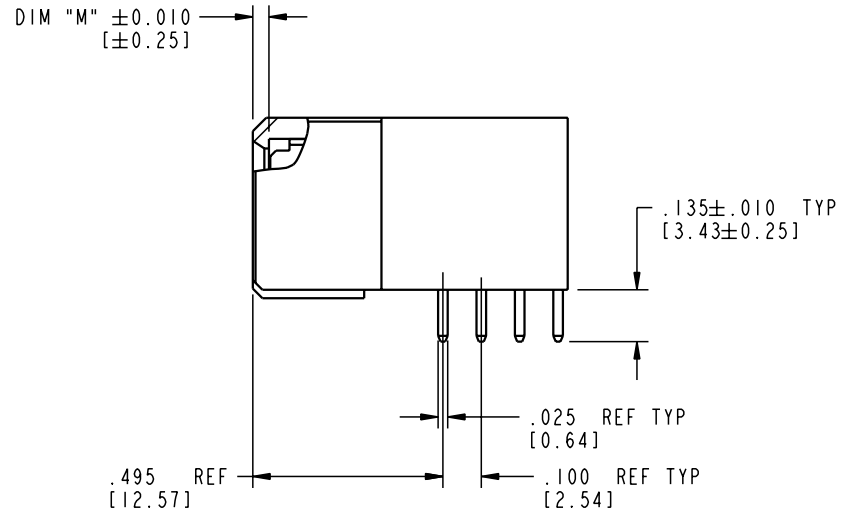
Tous droits strictement réservés. Reproduction ou communication o des tiers interdite sous quelque forme que ce soit sans autorisation écrite du propriétaire. Propriété de c FCI. Droits de reproduction FCI.

All rights strictly reserved. Reproduction or issue to third parties in any form whatever is not permitted without written authority from the proprietor. Property of FCI. Copyright FCI.


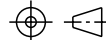

PRODUCT NUMBER
51776-003



BROKEN-OUT SECTION A-A
SCALE 2:1



BROKEN-OUT SECTION B-B
SCALE 2:1

mat'l code		SEE NOTE 2		tolerances unless otherwise specified		CUSTOMER		 www.fciconnect.com	
ltr	ecm no.	dr	date	linear	.XX ± .01 / 0.XX ± 0.3	COPY		title	
A				projection	.XXX ± .005 / 0.XX ± 0.13			6P + 24S	
				angles	.XXX ± .0020 / 0.XX ± 0.051			R/A SOLDER RECEPTACLE	
				dr	C. DAILY 08/29/02	INCH/MM		product family	
				enr	M. MOSTOLLER 08/29/02	scale		PwrBlade	
				chr	M. MOSTOLLER 08/29/02	1:1		code	
				appd	M. MOSTOLLER 08/29/02			213	
sheet index		revision sheet						size	
								A 51776-003	
								sheet 2 of 4	

Pro/E

cage code 22526

PDM: Rev:A

STATUS: Released

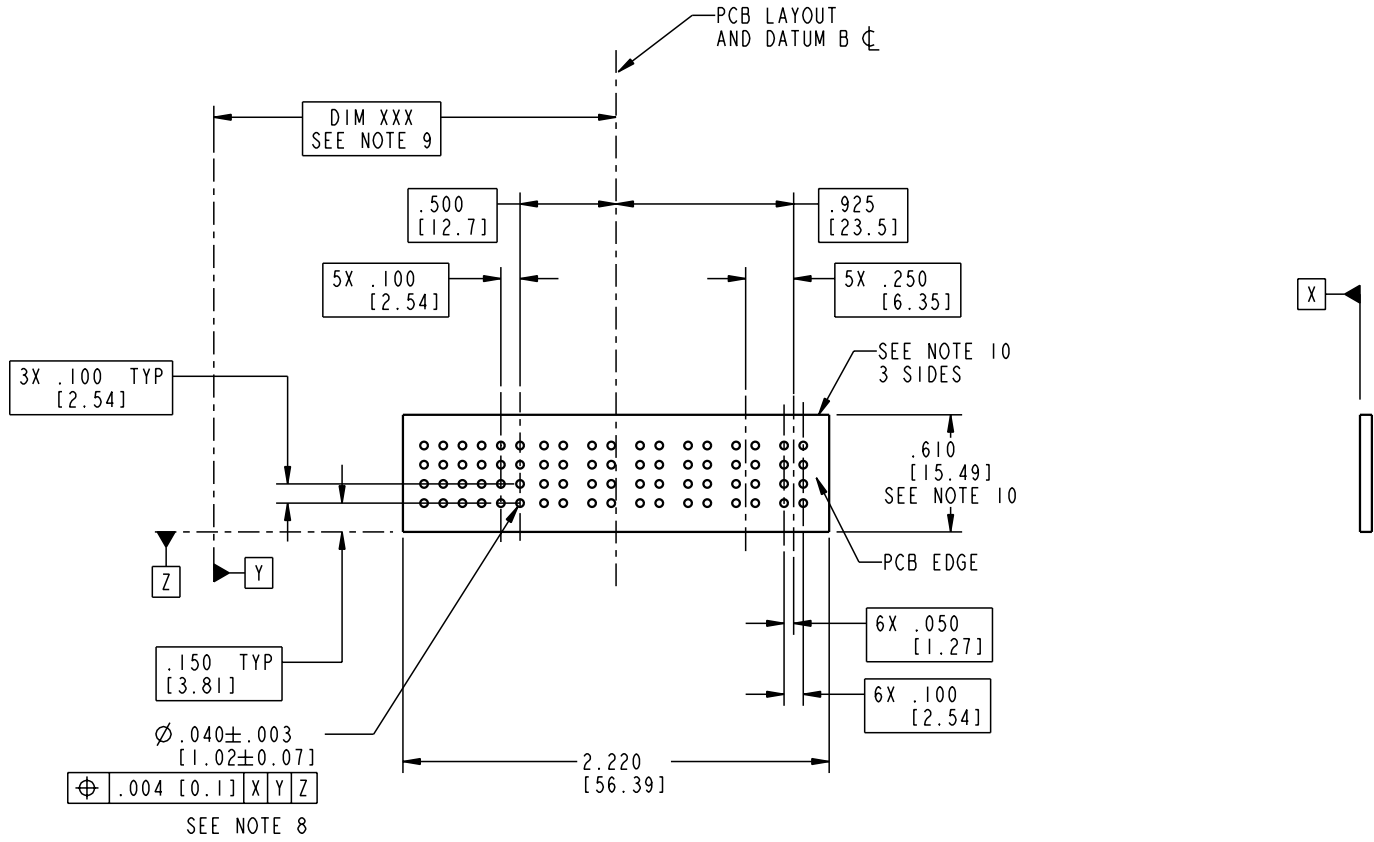
Printed: Aug 14, 2007

Tous droits strictement réservés. Reproduction ou communication o des tiers interdite sous quelque forme que ce soit sans autorisation écrite du propriétaire. Propriété de c FCI. Droits de reproduction FCI.

All rights strictly reserved. Reproduction or issue to third parties in any form, whenever is not permitted without written authority from the proprietor. Property of FCI. Copyright FCI.



PRODUCT NUMBER
51776-003



mat'l code				SEE NOTE 2		tolerances unless otherwise specified		CUSTOMER		 www.fciconnect.com	
ltr	ecn no.	dr	date	linear	.XX±.01/0.X±0.3	projection		COPY		title	
A				angles	.XXX±.005/0.XX±0.13					6P + 24S	
				dr	.XXX±.0020/0.XXX±0.051			INCH/MM		R/A SOLDER RECEPTACLE	
				enr	0° ± 2°	C. DAILY		08/29/02		product family	
				chr		M. MOSTOLLER		08/29/02		PwrBlade	
				appd		M. MOSTOLLER		08/29/02		code	
sheet index		revision sheet		scale		1:1		A		213	
								51776-003		3 of 4	

Pro/E

cage code 22526

PDM: Rev:A

STATUS: Released

Printed: Aug 14, 2007

Tous droits strictement réservés. Reproduction ou communication o des tiers interdite sous quelque forme que ce soit sans autorisation écrite du propriétaire. Propriete de c FCI. Droits de reproduction FCI.

A
FCI

All rights strictly reserved. Reproduction or issue to third parties in any form, whatever is not permitted without written authority from the proprietor. Property of FCI. Copyright FCI.

B

PRODUCT NUMBER
51776-003

NOTES:


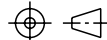
1. DIMENSIONS AND TOLERANCES ARE IN ACCORDANCE WITH ASME Y14.5M, 1994 UNLESS OTHERWISE SPECIFIED.

CONNECTOR NOTES:

- 2. HOUSING MATERIAL: UL 94 V-0 GLASS FILLED
HIGH-TEMP THERMOPLASTIC
POWER CONTACT MATERIAL: COPPER ALLOY
SIGNAL PIN MATERIAL: COPPER ALLOY
- 3. PLATING:
SIGNAL PINS: 30u"/0.76um Au OVER 50u"/1.27um Ni
POWER CONTACTS: 50u"/1.27um Ni UNDER ALL
WITH 30u"/0.76um Au ON CONTACT AREA
AND SnPb ON PCB INTERFACE
- 4. MANUFACTURER'S NAME, P/N, AND DATE CODE TO APPEAR ON THIS SURFACE.
- 5. PRODUCT SPECIFICATION GS-12-149.
APPLICATION SPECIFICATION BUS-20-067.

PCB NOTES:

- 6. ALL HOLE DIAMETERS ARE FINISHED HOLE SIZE.
- 7. MOUNTING HOLES, WHERE APPLICABLE, ARE UNPLATED.
- 8. $\varnothing .0453 \pm .0010$ [1.151 \pm 0.025] DRILLED HOLES PLATED WITH .0003 [0.008] MIN SnPb OVER .001 [0.03] TO .003 [0.08] Cu PLATING TO ACHIEVE $\varnothing .040 \pm .003$ [1.02 \pm .07] HOLE.
- 9. "DIM XXX" TO BE DETERMINED BY THE CUSTOMER.
- 10. CONNECTOR KEEP-OUT ZONE.

mat'l code		SEE NOTE 2		tolerances unless otherwise specified		CUSTOMER		 FCI www.fciconnect.com	
ltr	ecr no.	dr	date	linear	.XX±.01/0.X±0.3	COPY			
A				linear	.XXX±.005/0.XX±0.13	projection		title	
				angles	.XXX±.0020/0.XXX±0.051	INCH/MM		6P + 24S	
				dr	C. DAILY 08/29/02	scale		R/A SOLDER RECEPTACLE	
				enr	M. MOSTOLLER 08/29/02	1:1		product family	
				chr	M. MOSTOLLER 08/29/02			PwrBlade	
				appd	M. MOSTOLLER 08/29/02			code	
sheet index		revision sheet						213	
								4 of 4	

A

B

1 | 2

3 |

4

1 | 2

Pro/E

3 |

cage code 22526

4